



2014 Johnston VT651 Series Street Sweeper – COMPLETELY REFURBISHED - FOR SALE #0221

2014 Autocar Cab over Chassis 33,000GVWR - VIN# 516M1DB29EH216405
Cummins 6.6L diesel Engine, Automatic Transmission, 2-speed rear axle.
Dual Sweep. Dual Steering, Dual instrumentation, air conditioning.

Truck Chassis Mileage: 35,512 miles
Auxiliary Engine: 4,673 total hours.

Sweeper is a 2014 Johnston VT651 Vacuum Sweeper.

It is equipped the following Johnston features and Options:

Stainless Steel Hopper: 8.5 cubic Yard with automatic safety prop
Fluid Drive coupling w/ step up gear box.
415 Gallon Stainless Steel Water Tank
Single 50-gallon fuel tank – shared by both engines
Run Dry Water Pump – Hydraulic Drive
8' Sweep path Left or Right.
Dual Side lockers for storage
Systems Locker housing hydraulics, water, and pneumatic valves
Auxiliary Hydraulic Lift System
Automatic lift of sweep gear when transmission is placed in reverse.
Single center broom hydraulic w/ pneumatic adjustment
In cab dump controls
Wash down system.
1 Cab mounted strobes w/ limb guard
2 rear strobes w/ limb guard

John Deere **125 HP** 4045HF Turbocharged tier 4, **Electronic** Auxiliary Engine
High pressure washing system (Supawash) with Hose reel, Hand lance and Stainless-Steel
Spray bars for street flushing,
In-cab gutter broom tilt control (Dual),
In-cab gutter broom pressure and variable speed controls (dual),
Roof Access Door
Rear work Lights
Backup Camera
Remote & heated Mirrors (Left & Right)
Catwalk
Automatic Grease unit "LUBECORE"
Wide Sweep Broom & Nozzle cylinder lock
Master Battery shut-off control.

Sweeper is in great working condition, ready to work. Our Service Engineers have over 25 years' experience in Sweeper mechanics on Johnston Sweepers.

Sweeper is located in Street, Maryland. We can arrange an inspection at your convenience. We can also supply a transportation quote.

Optional 8" Catch Basin Cleaner can be added. Hydraulic Power assist or Spring assist.

The sweeper is getting a complete Paint job and is being completely refurbished. It will be white. This Sweeper is subject to prior sale.

Contact:

Gabriel Charky

1-877-695-3060 Ext. 101

Cell: 514-998-0436

Gabriel@SweeperPartsSales.com

HERE ARE PICTURES OF THIS SWEEPER **PRIOR TO REFURBISHING:**

SWEEPER IS BEING COMPLETELY PAINTED WHITE



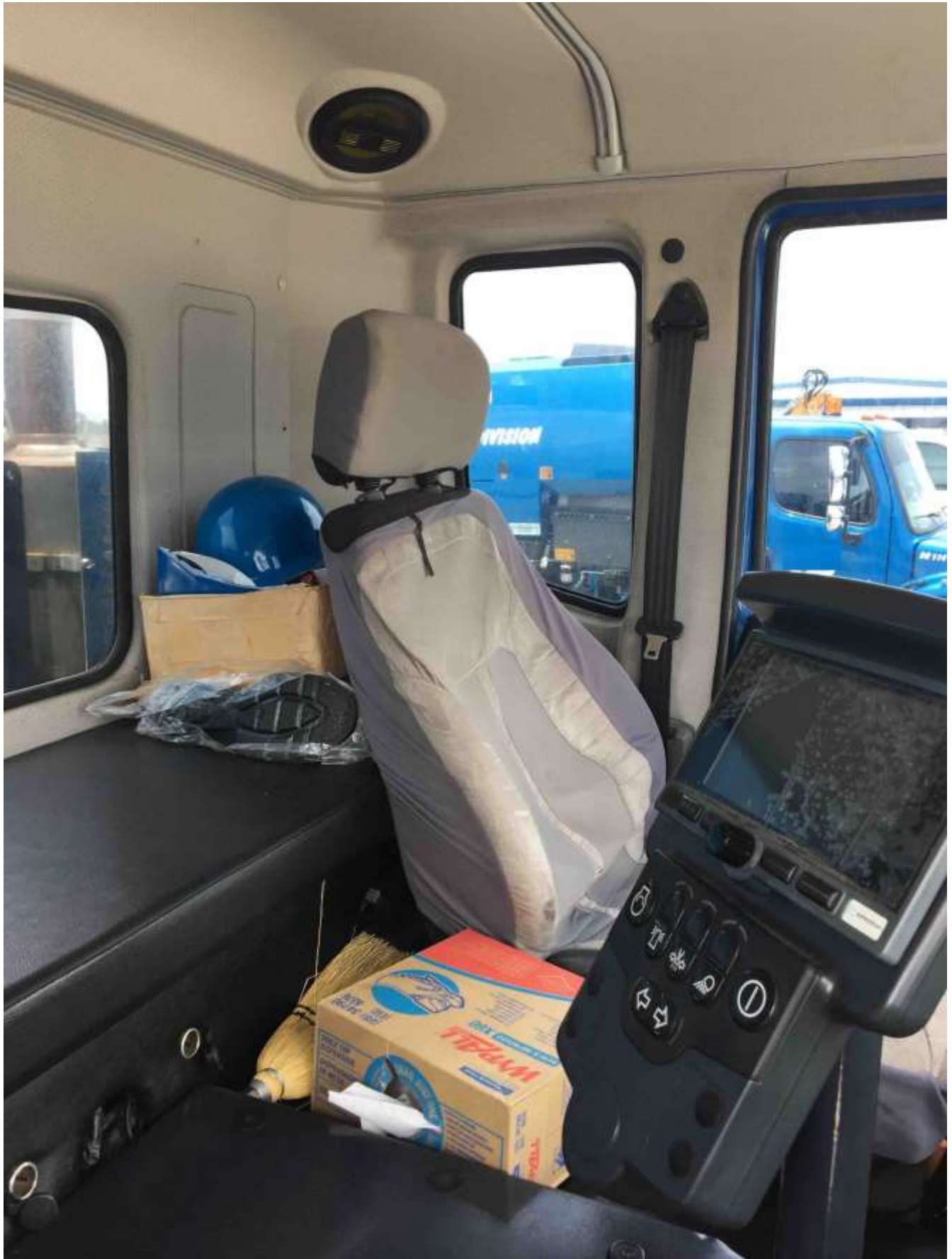














HERE ARE PICTURES OF PREVIOUSLY REFURBISHED SWEEPERS:











